

# HUNTERS GLEN

PLAT FILE NO.  
C.R. DOC. NO.

**KNOW ALL PERSONS BY THESE PRESENTS:** That Summergeate Development, LLC, a Minnesota limited liability company, owner of the following described property situated in the County of Carver, State of Minnesota, to wit:

That portion of the Southeast of the Northeast Quarter of Section 26, Township 116 North, Range 24 West, lying northerly of the centerline of Township Road, Excepting therefrom the West 710.23 feet thereof, Carver County, Minnesota.

Has caused the same to be surveyed and platted as **HUNTERS GLEN** and does hereby donate and dedicate to the public for public use forever the public ways, and also dedicates the easements as shown on this plat for drainage and utility purposes only.

In witness whereof said Summergeate Development, LLC, a Minnesota limited liability company, has caused these presents to be signed by its proper officer this \_\_\_\_\_ day of \_\_\_\_\_, 20\_\_\_\_.

**SUMMERGATE DEVELOPMENT, LLC**

By \_\_\_\_\_  
Its \_\_\_\_\_

**STATE OF \_\_\_\_\_**  
**COUNTY OF \_\_\_\_\_**  
The foregoing instrument was acknowledged before me this \_\_\_\_\_ day of \_\_\_\_\_, 20\_\_\_\_, by \_\_\_\_\_, its \_\_\_\_\_ of Summergeate Development, LLC, a Minnesota limited liability company, on behalf of the company.

\_\_\_\_\_  
(Signature) (Name Printed)

Notary Public, \_\_\_\_\_ County, \_\_\_\_\_

My Commission Expires \_\_\_\_\_

I, Chris Ambourn, do hereby certify that this plat was prepared by me or under my direct supervision; that I am a duly Licensed Land Surveyor in the State of Minnesota; that this plat is a correct representation of the boundary survey; that all mathematical data and labels are correctly designated on this plat; that all monuments depicted on this plat have been, or will be correctly set within one year; that all water boundaries and wet lands, as defined in Minnesota Statutes, Section 505.01, Subd. 3, as of the date of this certificate are shown and labeled on this plat; and all public ways are shown and labeled on this plat.

Dated this \_\_\_\_\_ day of \_\_\_\_\_, 20\_\_\_\_.

Chris Ambourn, Licensed Land Surveyor  
Minnesota License No. 43055

**STATE OF MINNESOTA**  
**COUNTY OF HENNEPIN**  
This instrument was acknowledged before me on \_\_\_\_\_ by Chris Ambourn, Minnesota License No. 43055.

\_\_\_\_\_  
(Signature) (Name Printed)

Notary Public, \_\_\_\_\_ County, Minnesota

My Commission Expires \_\_\_\_\_

**CITY COUNCIL, CITY OF VICTORIA, MINNESOTA**  
This plat of **HUNTERS GLEN** was approved and accepted by the City Council of the City of Victoria, Minnesota at a regular meeting thereof held this \_\_\_\_\_ day of \_\_\_\_\_, 20\_\_\_\_, and said plat is in compliance with the provisions of Minnesota Statutes, Section 505.03, Subd. 2.

City Council, City of Victoria, Minnesota

By: \_\_\_\_\_ Mayor  
By: \_\_\_\_\_ City Manager

**COUNTY SURVEYOR, Carver County, Minnesota**  
Pursuant to Chapter 395, Minnesota Laws of 1971, this plat has been approved this \_\_\_\_\_ day of \_\_\_\_\_, 20\_\_\_\_.

Brian Praske, County Surveyor

**COUNTY AUDITOR, Carver County, Minnesota**  
I hereby certify that taxes payable in 20\_\_\_\_ and prior years have been paid for land described on this plat. Dated this \_\_\_\_\_ day of \_\_\_\_\_, 20\_\_\_\_.

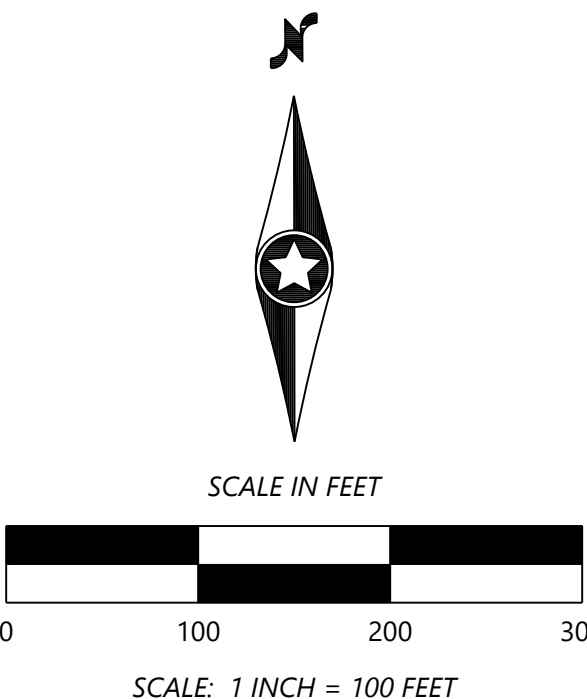
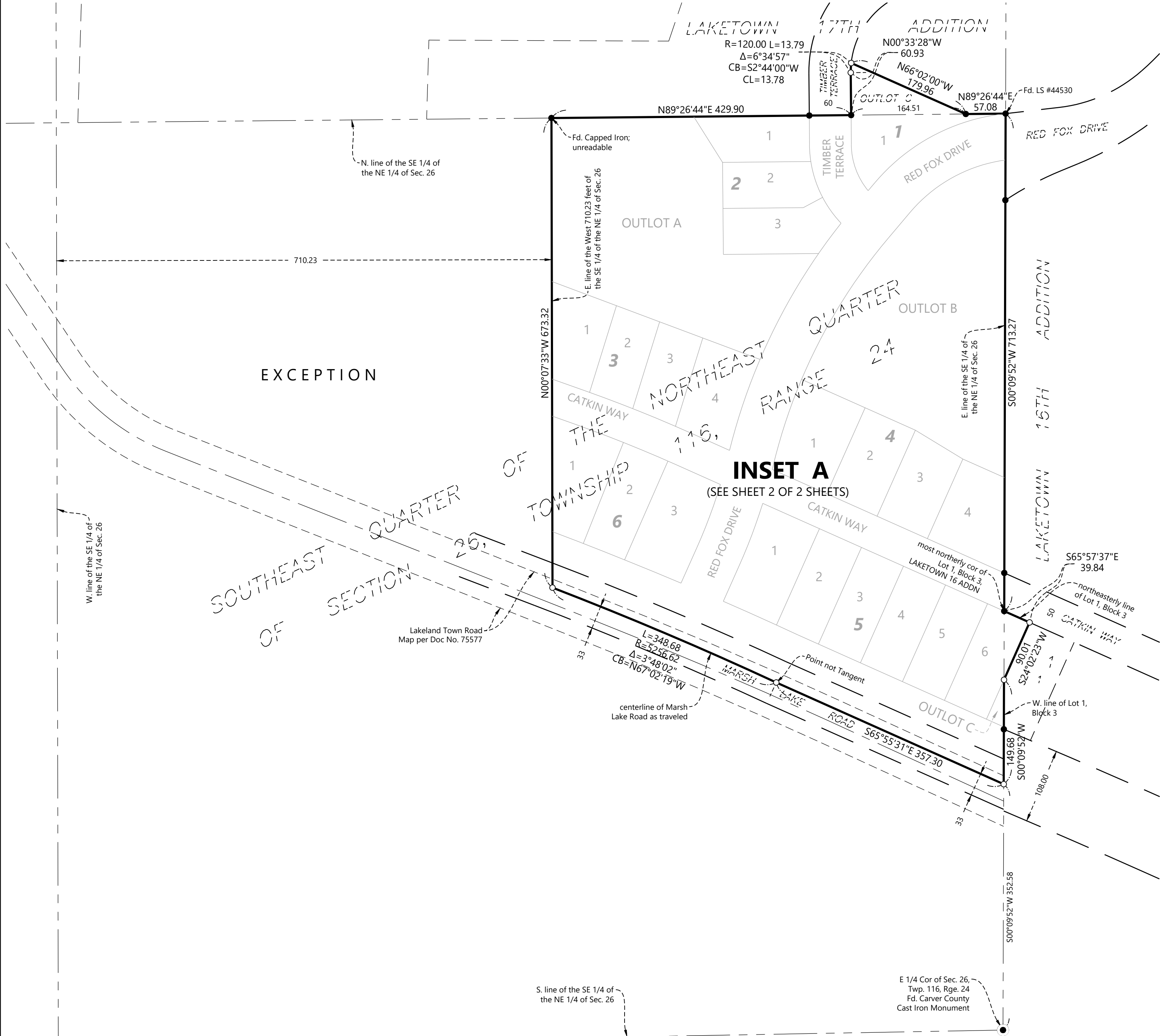
Crystal Campos, County Auditor

By: \_\_\_\_\_

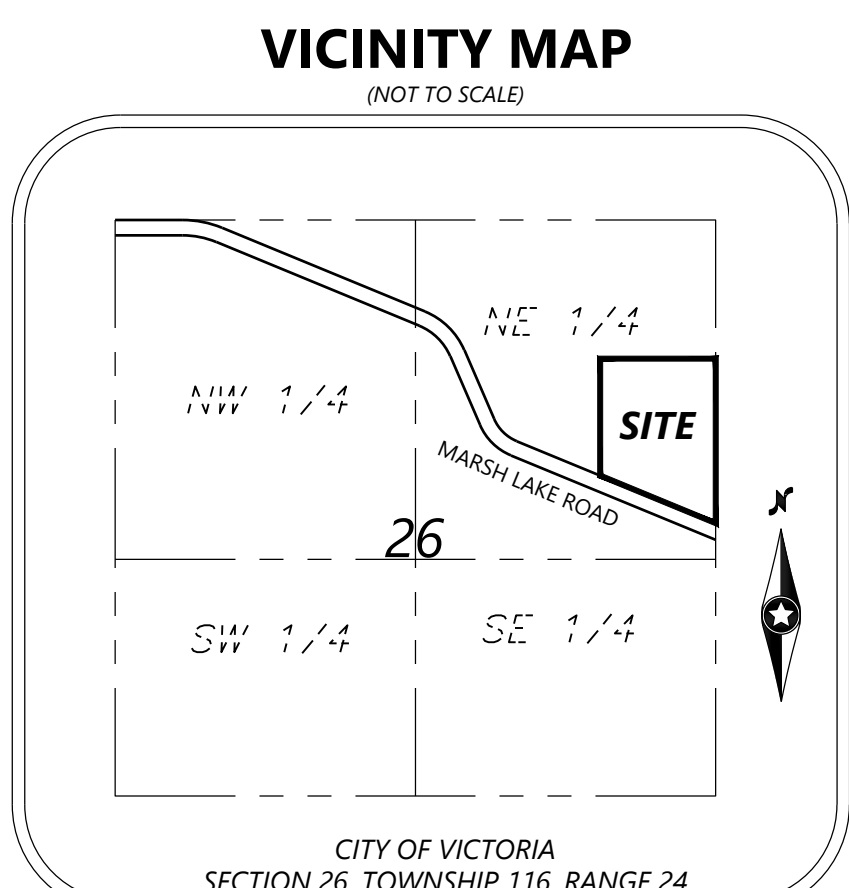
**COUNTY RECORDER, Carver County, Minnesota**  
I hereby certify that this plat of **HUNTERS GLEN** was filed this \_\_\_\_\_ day of \_\_\_\_\_, 20\_\_\_\_, at \_\_\_\_\_ o'clock \_\_\_\_\_ M., as Document No. \_\_\_\_\_.

Kaaren Lewis, County Recorder

By: \_\_\_\_\_

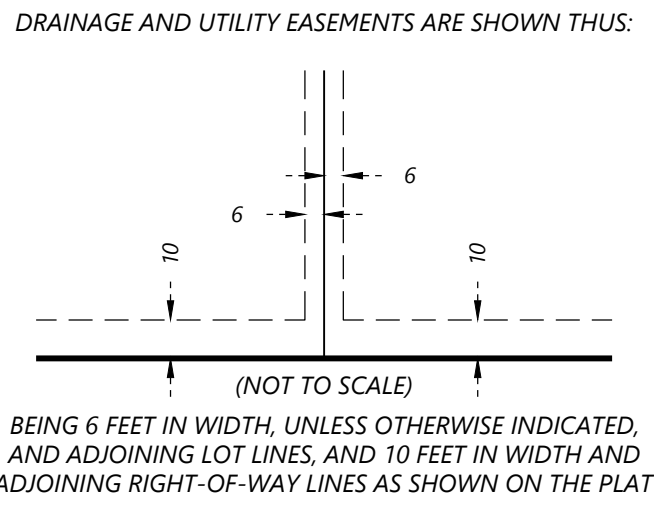


○ SET 1/2" BY 14" IRON PIPE WITH CAP #43055  
● FOUND MONUMENT, LS #26147, UNLESS OTHERWISE NOTED ON SURVEY  
THE EAST LINE OF THE SE 1/4 OF THE NE 1/4 OF SECTION 26, TOWNSHIP 116, RANGE 24, HAS A BEARING OF S 00°09'52" W (CARVER COUNTY, NAD83 (1986AD))



# HUNTERS GLEN

PLAT FILE NO.  
C.R. DOC. NO.



- SET 1/2" BY 14" IRON PIPE WITH CAP #43055
  - FOUND MONUMENT, LS #26147, UNLESS OTHERWISE NOTED ON SURVEY
- THE EAST LINE OF THE SE 1/4 OF THE NE 1/4 OF SECTION 26, TOWNSHIP 116, RANGE 24, HAS A BEARING OF S 00°09'52" W (CARVER COUNTY, NAD83 (1986ADJ))

