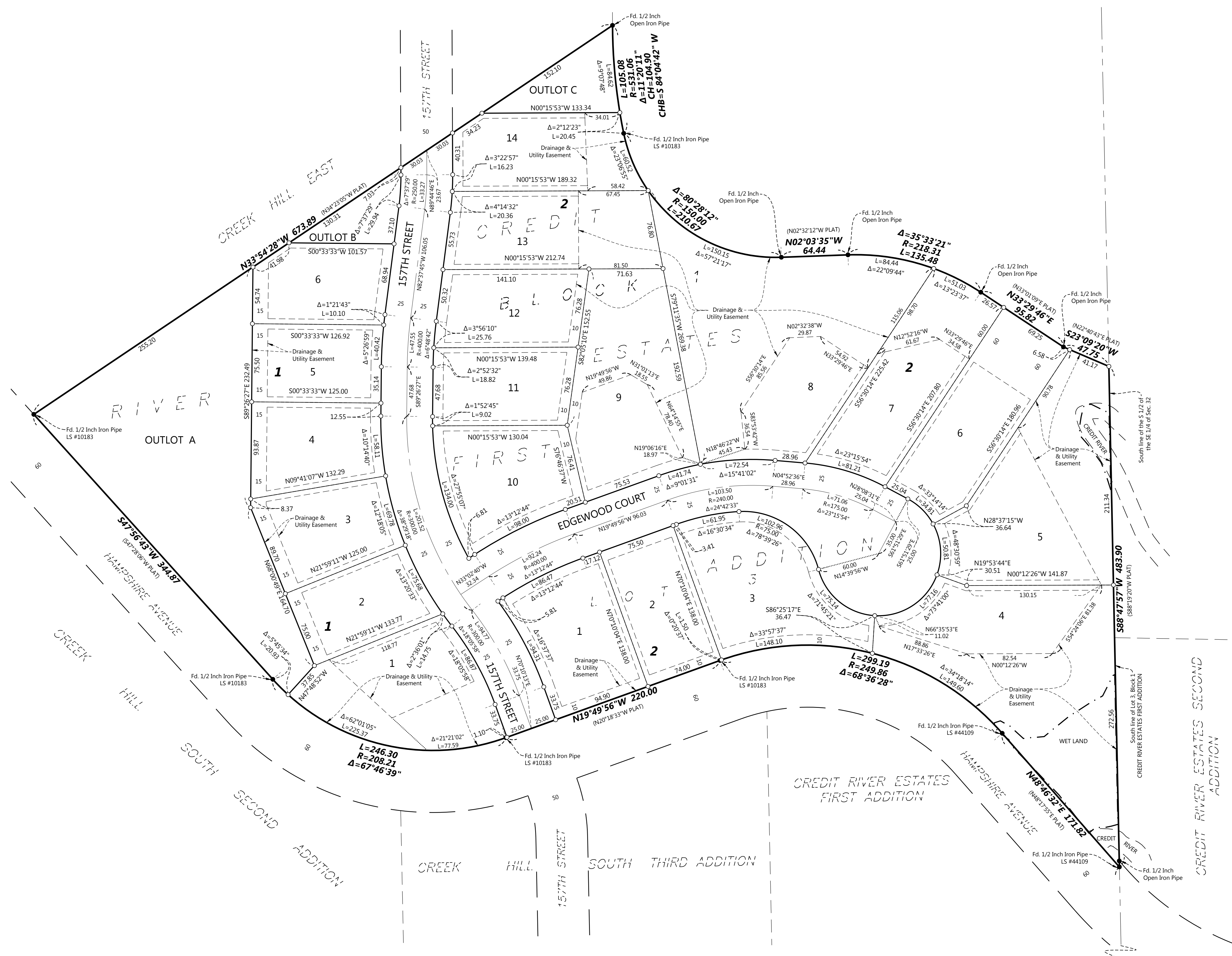
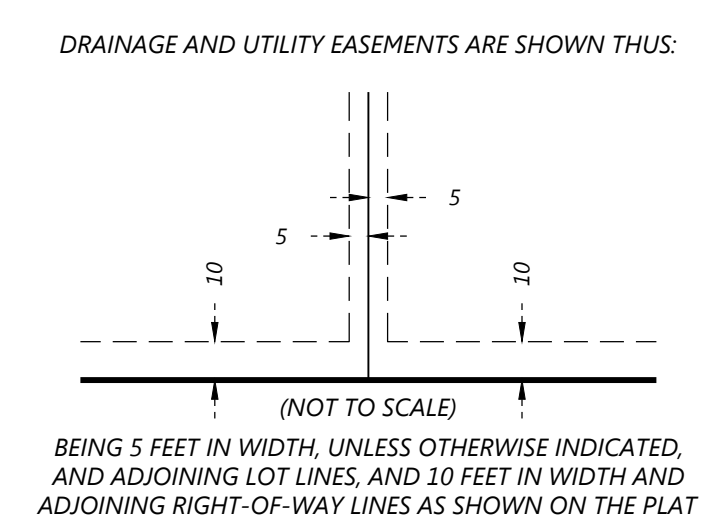


HAMPSHIRE PRESERVE

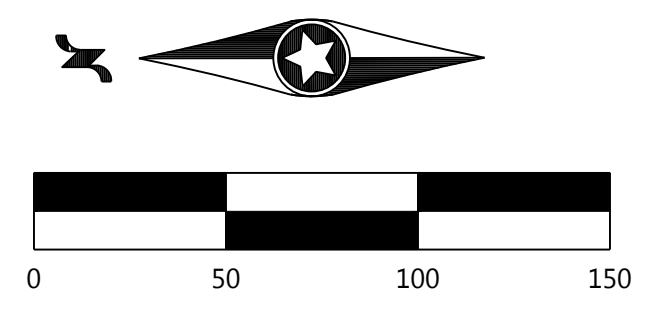
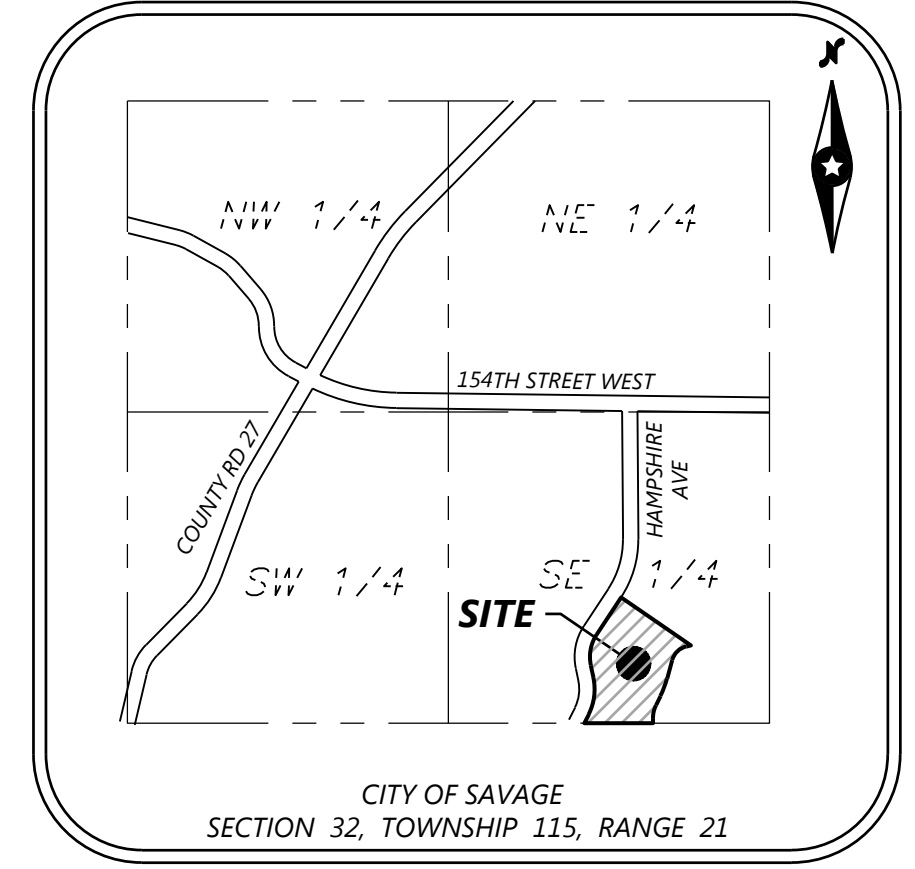


○ SET 1/2" BY 14" IRON PIPE WITH CAP #53596
 ● FOUND MONUMENT AS NOTED ON SURVEY
 BEARINGS SHOWN ARE BASED UPON THE SOUTH LINE OF LOT 3, BLOCK 1, CREDIT RIVER ESTATES FIRST ADDITION IS ASSUMED TO BEAR S88°47'57"W



VICINITY MAP

(NOT TO SCALE)



S 1/4 Cor of Sec. 32, Twp. 11S, Rge. 21E, Fd. 1/2 Inch Iron Pipe